



## Easy Chess Puzzle # 0068

By

G Bud Games  
<https://gbud.in>

November 9, 2021

## Contents

<b>Easy Chess puzzle # 0068 - Mate in 2 moves</b>	<b>3</b>
Easy chess puzzle 0068 . . . . .	3
Solution to easy chess puzzle 0068 . . . . .	4
Solution 1 . . . . .	4
Right moves for the solution to the easy chess puzzle 0068	6
Explanation for the moves . . . . .	6
Categories of easy chess puzzle 0068 . . . . .	6
How to view the solution to easy chess puzzle 0068 . . . . .	7
How to get help for moves in the easy chess puzzle 0068 . . . . .	7
Play chess for free . . . . .	9

## List of Figures

1	Solve this easy chess puzzle 0068. Mate in 2 moves @ <a href="https://gbud.in/g747f01">https://gbud.in/g747f01</a> . . . . .	3
2	Solve this chess puzzle online with solution @ <a href="https://gbud.in/g747f01">https://gbud.in/g747f01</a>	3
3	Initial board position of easy chess puzzle 0068 . . . . .	4
4	Nd6+ - This is a discovered check as the movement of the knight results in a check from the rook. This knight also attacks f7 . . . . .	5
5	Nd8 - Opponent's knight blocks the check threat . . . . .	5
6	Rxd8# - Rook captures the opponent's knight and check-mate. Opponent's king can not come to f7 due to the attack from your knight. This is how you can mate in 2 moves. . . . .	6
7	Click the solution button to view solutions @ <a href="https://gbud.in/g747f01">https://gbud.in/g747f01</a> . . . . .	7
8	Click the help button to get help on next move @ <a href="https://gbud.in/g747f01">https://gbud.in/g747f01</a> . . . . .	8
9	Solve more easy puzzles @ <a href="https://gbud.in/chsezpz">https://gbud.in/chsezpz</a> . . . . .	8
10	Solve other puzzles @ <a href="https://gbud.in/chsgppz">https://gbud.in/chsgppz</a> . . . . .	8
11	Play chess online for free. Solve puzzles and play with friends	9
12	Solve this puzzle online by scanning this QR code or go to the link below . . . . .	10

## Easy Chess puzzle # 0068 - Mate in 2 moves

Solve this easy chess puzzle and improve your chess games through improvement of your chess strategies and chess tactics.

Puzzle No : 0068

Difficulty level : Easy

Description : Mate in 2 moves

Next Move : White

Player level : Beginner

Short URL for puzzle : <https://gbud.in/g747f01>

### Easy chess puzzle 0068

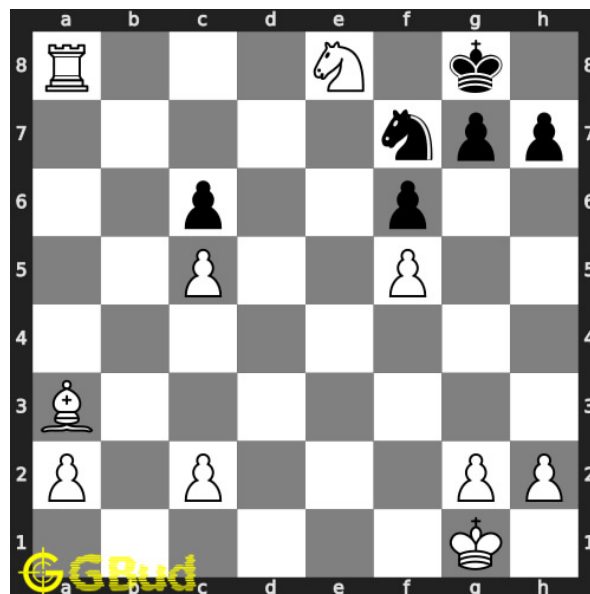


Figure 1: Solve this easy chess puzzle 0068. Mate in 2 moves @ <https://gbud.in/g747f01>



Figure 2: Solve this chess puzzle online with solution @ <https://gbud.in/g747f01>

## Solution to easy chess puzzle 0068

At this puzzle, next **move** is by **White**. The objective of the puzzle is to mate in 2 moves.

See the interactive solution at the [puzzle page](#)

### Solution 1

**Initial board position** This is the initial board position of easy chess puzzle 0068.

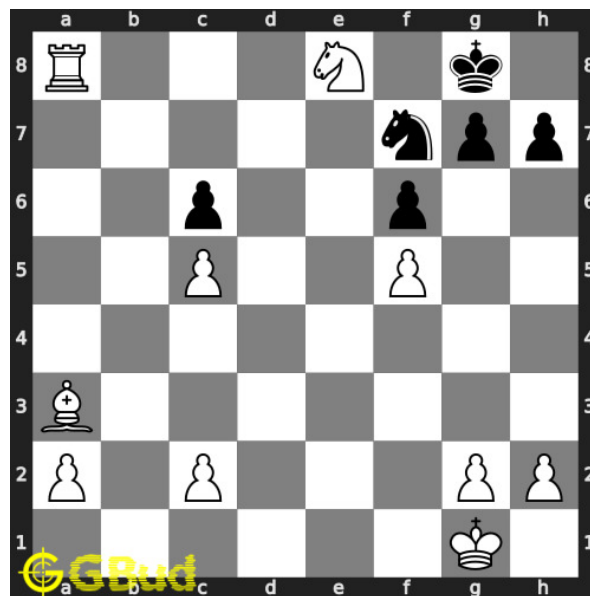


Figure 3: Initial board position of easy chess puzzle 0068

**Move 1** Move by white

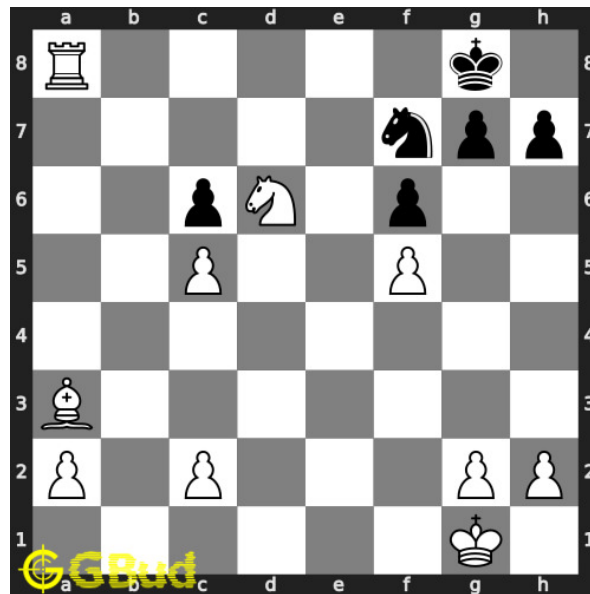


Figure 4: Nd6+ - This is a discovered check as the movement of the knight results in a check from the rook. This knight also attacks f7

**Move 2** Move by black

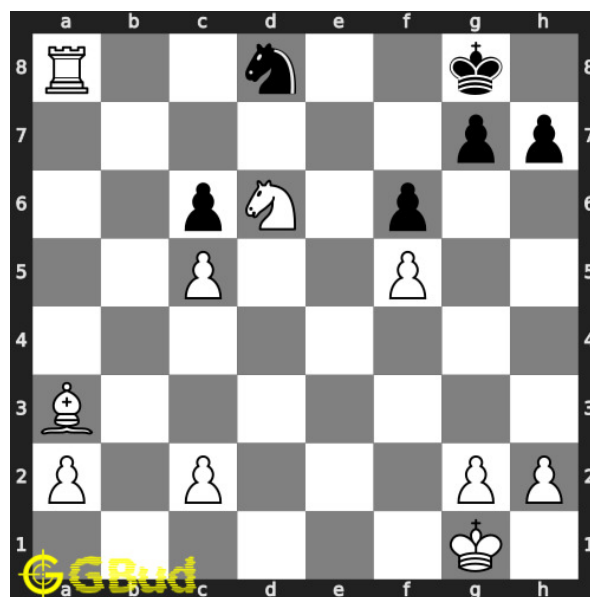


Figure 5: Nd8 - Opponent's knight blocks the check threat

**Move 3** Move by white

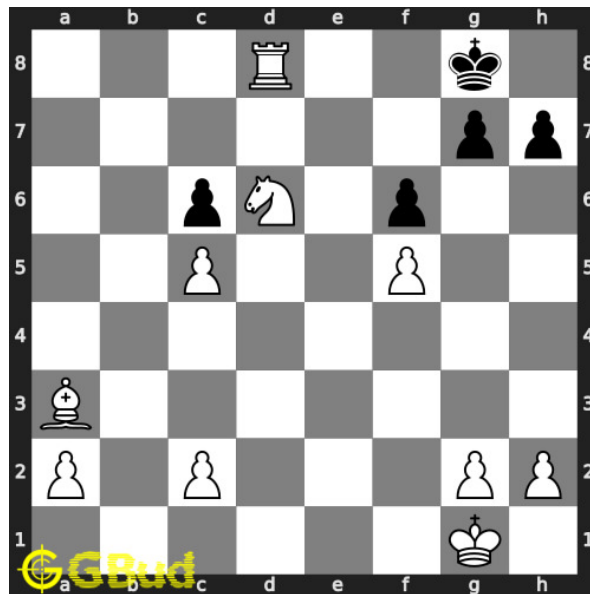


Figure 6: Rxd8# - Rook captures the opponent's knight and checkmate. Opponent's king can not come to f7 due to the attack from your knight. This is how you can mate in 2 moves.

### Right moves for the solution to the easy chess puzzle 0068

Based on the objective of the puzzle, you have to make the right moves. Following are the right moves

1. Nd6+, Rxd8#

### Explanation for the moves

1. Nd6+ - This is a discovered check as the movement of the knight results in a check from the rook. This knight also attacks f7
2. Rxd8# - Rook captures the opponent's knight and checkmate. Opponent's king can not come to f7 due to the attack from your knight. This is how you can mate in 2 moves.
3. Nd8 - Opponent's knight blocks the check threat
4. For right move - You have had a checkmate through a discovered check. Good job
5. For wrong move - You could have moved your knight to d6 to have a mate in 2 moves. Try again

### Categories of easy chess puzzle 0068

This easy chess puzzle falls in these categories.

1. [Easy chess puzzles](#)
2. [Mate in 2 puzzles in chess](#)
3. [Endgame puzzles in chess](#)
4. [Strategy puzzles in chess](#)
5. [Rook puzzles in chess](#)
6. [Knight puzzles in chess](#)

## How to view the solution to easy chess puzzle 0068

To view the [solution to this puzzle](#), follow the steps given below

1. Go to the [puzzle page](#)
2. Click the solution button (Key as shown [below](#)) to view the solution



Figure 7: Click the solution button to view solutions @ <https://gbud.in/g747f01>

## How to get help for moves in the easy chess puzzle 0068

To get help or the possible next moves in the puzzle, , follow the steps given below

1. Go to the [puzzle page](#)

2. Click the help button (exclamation mark as shown [below](#)) to get help or suggestion on next possible [move](#)



Figure 8: Click the help button to get help on next move @ <https://gbud.in/g747f01>



Figure 9: Solve more easy puzzles @ <https://gbud.in/chsezpz>



Figure 10: Solve other puzzles @ <https://gbud.in/chsgppz>



## Play chess for free

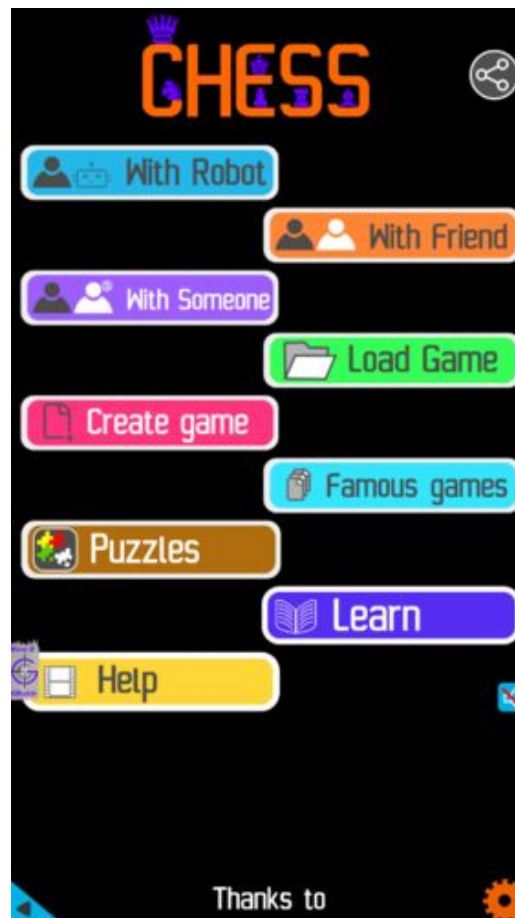


Figure 11: Play chess online for free. Solve puzzles and play with friends

Play chess for free at <https://gbud.in/chs>

We present you a platform to play chess online with friends for free. No need to install any app. You can play chess for free without registration or login.

Simple. You can do several chess related activities.

1. [solve chess puzzles](#)
2. [learn about chess](#)
3. [play chess with computer](#)
4. [play chess with friend](#)
5. [create your own chess games](#)
6. [fen viewer](#)
7. [fen editor](#)
8. [fen generator](#)
9. [pgn viewer](#)
10. [chess board editor](#)

11. [view famous chess games.](#)



Figure 12: Solve this puzzle online by scanning this QR code or go to the link below

<https://gbud.in/g747f01>

Read the latest article on Easy Chess puzzle # 0068 - Mate in 2 moves by scanning this QR code or click the link

Previous article : « [Easy Chess puzzle # 0067 - Mate in 1 move](#)

Next article : [Easy chess puzzles](#) »

[Back to top](#)

[Contact Us](#)

© GBud Games 2021